

Triton

Overhead-Mounted Dispenser/Split-type DC Charging System



Public



Fleet



CCS-2



Nova
Power Cabinet



Triton dispenser is designed for fleet depot charging, where space optimization and performance are crucial. When paired with the **StarCharge Nova power cabinet**, the **Nova + Triton system** achieves dynamic power distribution, supports up to 12 dispensers, and delivers 97% power efficiency. This modular and split-type charging system ensures high availability and continuous operation, with a power capacity range from 360kW to 720kW, making it an ideal solution for charging light, medium, and heavy-duty



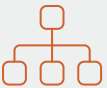
Space-Saving Design

Overhead-mounted for optimized space usage in fleet depots, maximizing operational efficiency in confined spaces.



High Output

Deliver up to 250A current and 250kW power per connector, ensuring fast and reliable charging.



Modular and Split-Type Design

Ensures system availability and continuous operation, even when power module or dispenser are out of orders.



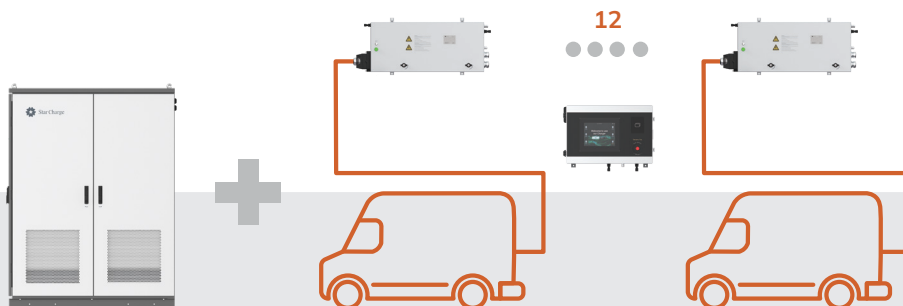
Flexible Integration to Backend

Supports the OCPP 1.6J protocol for integration with StarCharge or third-party systems, providing flexibility for evolving fleet needs.



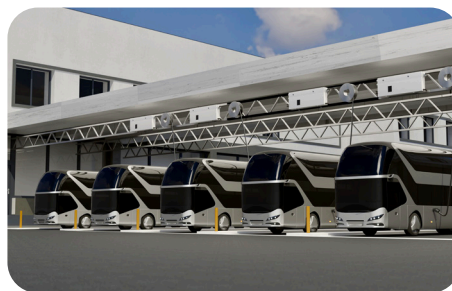
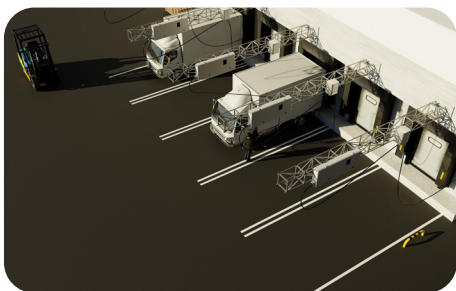
Nova+Trion: Enhanced Space Saving and Utilization Rate for Greater Operational Efficiency

- Single CCS2 250A max
- Dimensions: 375*860*121.5mm
- 10m cable
- Install on the roof



Depot Charging

Logistic cars and eBus are charged overnight during non-working hours. The average charging time ranges from 6 hour to 8 hours.



Specifications

Specifications are subject to change without notice.

Rendering



Power Input	Auxiliary power supply: 230Vac±10%, single-Phase, 50/60 Hz, L+N+PE	
Output Interface	1 x CCS2	
Output Voltage	150-1000Vdc	
Output Current	200A rating / connector (250A max. / connector)	
Display	NA	10.4-inch touch screen
Authentication	Without Charge Controller: Free Charging, APP (remote start), MAC authentication With Charge Controller: RFID card, APP (remote start & QR code), Free charging, MAC authentication, Credit card (optional, payment terminal is necessary)	
Network Interface	Ethernet for Power Cabinet local connection	
Protocol (EVSE&Backend)	OCPP 1.6j	
Protocol (EVSE&EV)	DIN 70121, ISO 15118	
Operating Temperature	-30 C to 55 C (Derating from 50 C)	
Humidity	5%-95% no condensation	
IP Rating	IP55	
IK Rating	IK10 (Screen IK08)	
Cooling	Forced Air Cooling	
Charging Cable Length	10m	
Dimensions (WxHxD)	860*375*121.5mm	590*398.5*160mm
Weight	Approx. 49.8kg(including charging cable)	Approx. 19kg
Installation	Wall-mounting(recommended to be horizontal)	